

Drums

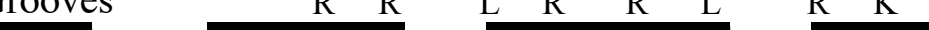
Funk Rock Beats

Paradiddle Grooves

[illegible]

Linear Grooves

Linear Grooves



R R L R R L R K ○

Swing Feel

Ride Cym

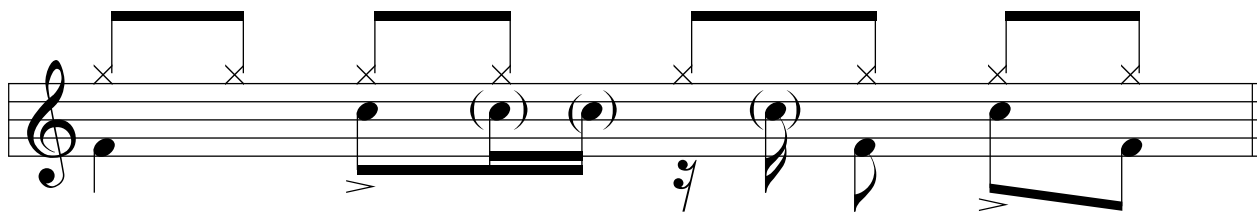
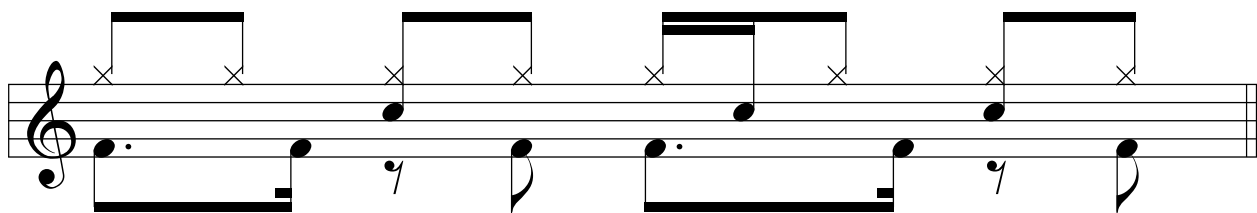
g Feel

The musical notation for 'g Feel' is written on a single staff. It begins with a treble clef and a key signature of one flat (B-flat). The melody consists of four measures. The first measure contains a quarter note on G4, a quarter note on A4, and a quarter note on B4. The second measure contains a quarter note on A4, a quarter note on G4, and a quarter note on F4. The third measure contains a quarter note on E4, a quarter note on D4, and a quarter note on C4. The fourth measure contains a quarter note on B3, a quarter note on A3, and a quarter note on G3. The notation is written in a style that suggests a specific feel or mood.

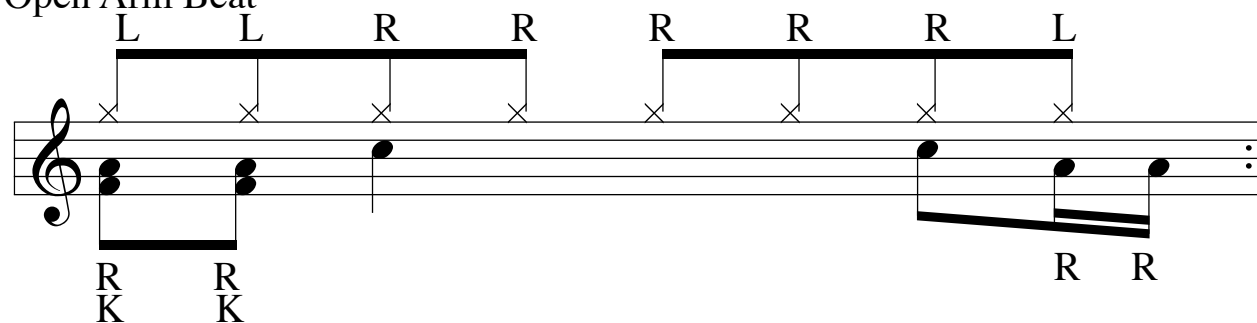
Swing Feel

g Feel

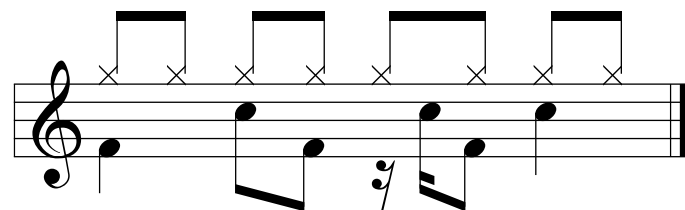
A musical staff in treble clef with a key signature of one flat (Bb). The melody consists of eighth and quarter notes, with some notes beamed together. There are 'x' marks above the staff at specific intervals. A fermata is placed over the final note. A '7' is written below the staff, indicating a seventh interval.



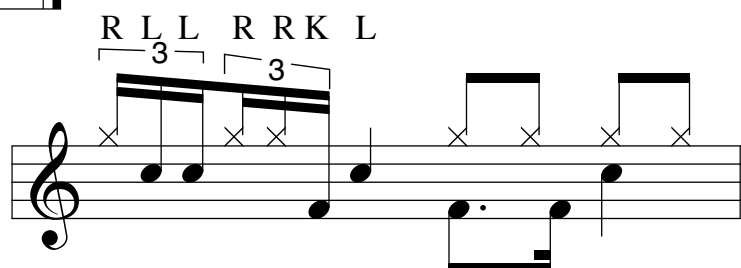
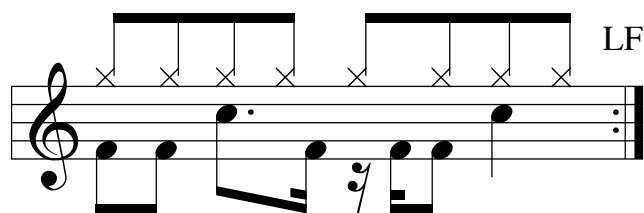
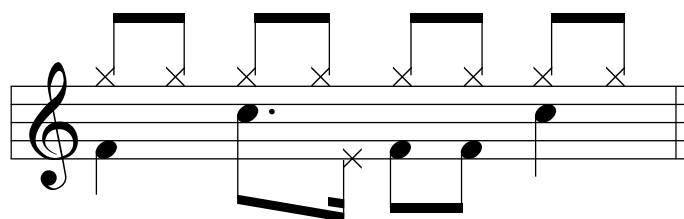
Open Arm Beat

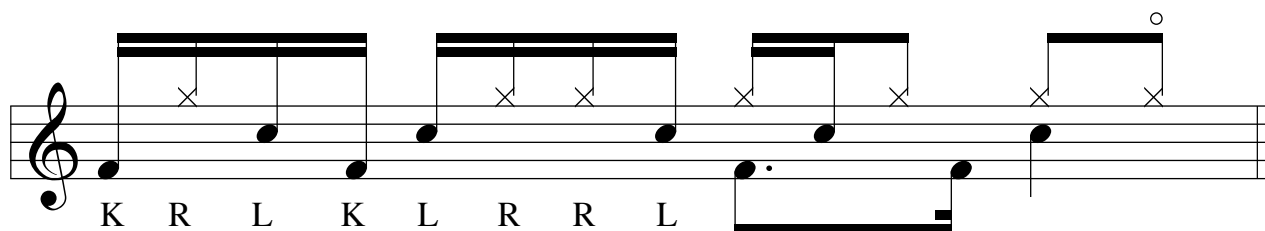


Funk Beats



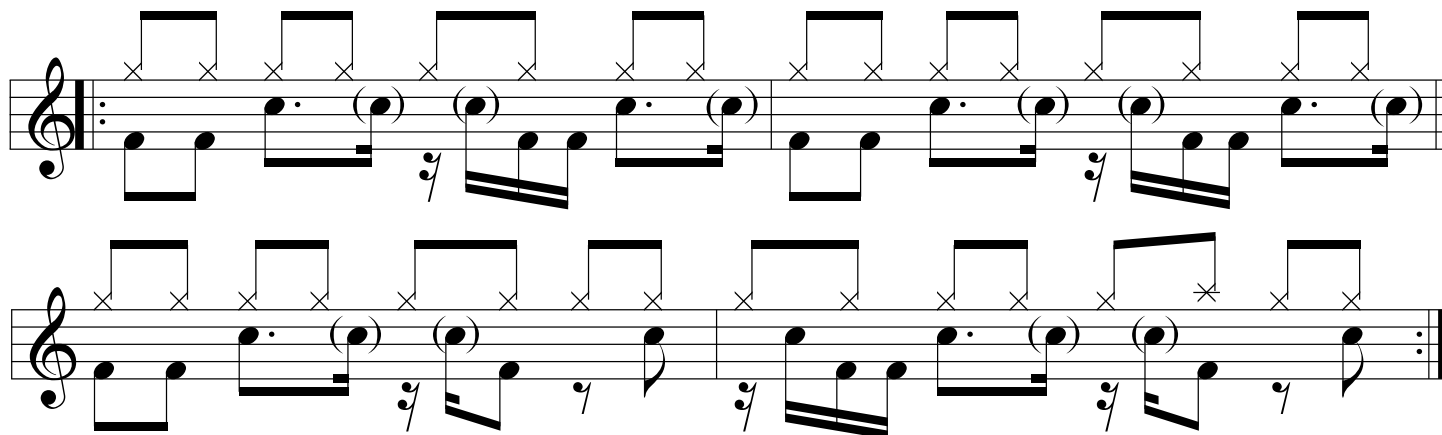
HH





Also refer to Drops and Fills pg 3 "Linier Fills"

4 Bar "Amen" Pattern from The Winstons' 1969 song caalled "Amen, Brother"



Two Bar Phrase

